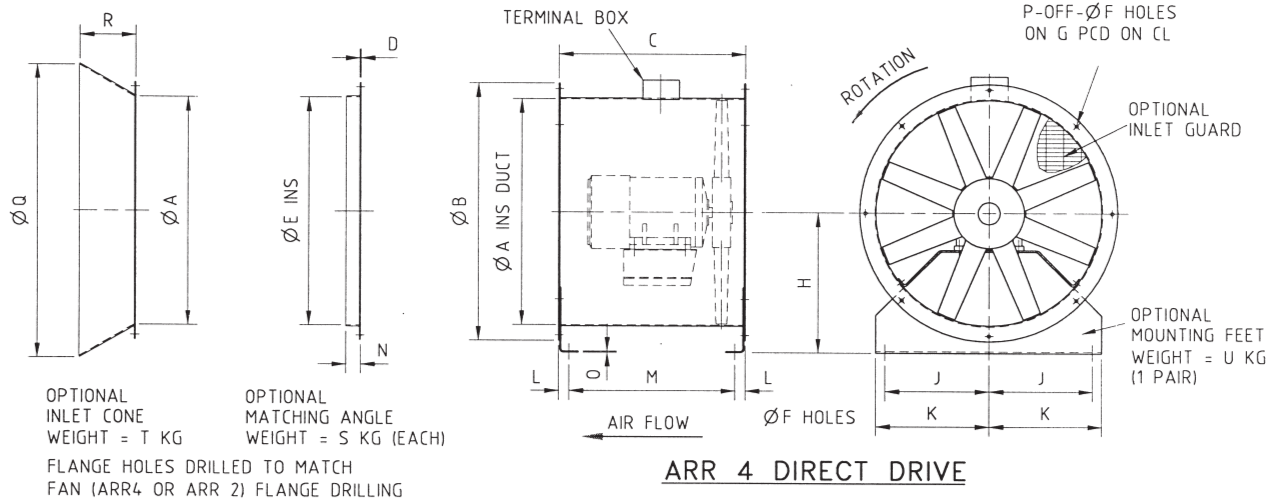
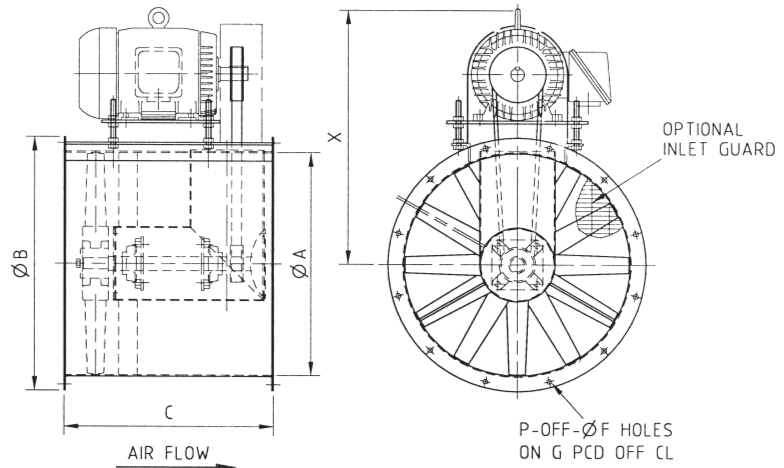


**'AF' SERIES
AXIAL FLOW FANS**

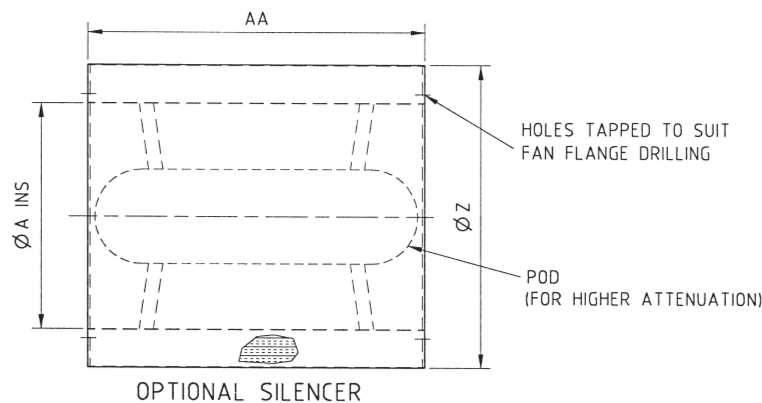


V KG = WEIGHT OF ARR 4 FAN ASS'Y EXCL. MOTOR & EXTRAS
W = MAX. WEIGHT
* DEPENDENT ON MOTOR SIZE.
Y KG = WEIGHT OF ARR 2 FAN ASS'Y EXCL. MOTOR & EXTRAS

ARR 2 BELT DRIVE



MODEL No	ARR 4 DIRECT DRIVE															WEIGHT KG					ARR 2 BELT DRIVE						WT. KG	
Ø A	B	C	D	E	F	G	H	J	K	L	M	N	O	P	Q	R	S	T	U	V	W	B	C	F	G	P	X	Y
AF300	368	302	3	306	10	348	200	130	150	28	244	30	3	8	390	75	1.5	4	2	9	20	-	-	-	-	-	-	-
AF380	446	410	3	386	12	420	240	170	190	28	354	30	3	8	470	78	2	6	3	14	40	448	405	11	422	12	480	48
AF480	546	405	3	486	12	520	310	220	240	28	349	30	3	8	600	100	2.5	8	4	18	80	548	450	11	522	12	550	62
AF610	696	510	3	616	12	666	380	280	305	28	454	40	3	8	750	120	4	18	5	27	85	696	610	12	660	12	600	92
AF760	846	510	3	766	12	814	485	355	380	28	454	40	5	8	940	150	5	26	7	33	*	848	640	14	810	12	820	115
AF965	1070	800	3	970	14	1035	600	458	483	28	744	50	5	16	1170	180	7.5	35	18	72	*	1070	800	14	1035	16	950	184
AF1220	1326	850	3	1226	14	1290	740	570	610	53	744	50	5	20	1470	220	9.5	55	32	102	*	1350	1050	16	1290	20	1070	266
AF1525	1675	950	5	1530	14	1610	920	710	763	55	840	50	5	24	1830	270	17.5	90	46	258	*	-	-	-	-	-	-	-



MODEL No		SILENCER				WEIGHT KG			
A	Z	AA		WITHOUT POD		WITH POD			
		1xDIA	2xDIA	1xDIA	2xDIA	1xDIA	2xDIA	1xDIA	2xDIA
SIL300	450	300	600	10	15	-	-	-	-
SIL380	530	380	760	13	19	-	-	-	-
SIL480	630	480	960	20	28	-	-	-	-
SIL610	760	600	1150	26	35	44	55	-	-
SIL760	910	750	1500	43	58	73	92	-	-
SIL965	1165	950	1800	96	125	148	185	-	-
SIL1220	1420	1150	2350	110	230	160	330	-	-
SIL1525	1725	1500	3000	160	320	240	480	-	-